

# Accessible Playground Consultations

Middlesex County Accessibility  
Advisory Committee Meeting  
February 17, 2017

# Background

- Accessibility for Ontarians with Disabilities Act
- Integrated Accessibility Standards Regulation
- Consultation requirements:
  - Exterior paths of travel (rest areas)
  - Recreational trails
  - Outdoor play spaces
  - Accessible on-street parking

# Purpose

- Purpose of the consultation is to provide municipalities with a guideline when developing or redeveloping an outdoor play space.
- Municipality is required to consult with the public, people with disabilities and an AAC where one has been established.

# Consultation Process

- Consult with local municipal parks and recreation staff.
- Consult with Accessibility Advisory Committee (public meeting)
- Online survey – to allow public to provide input into the document
- Outreach to local community groups, if possible

# Accessibility Features Continued

- Municipalities shall incorporate accessibility features, such as sensory and active play components into the design of outdoor play spaces.
- These should address the needs of **children and caregivers with various disabilities.**

# Accessibility Features

- A minimum of 20% of features incorporated into a play structure shall be accessible.
- Examples:
  - Play counters
  - Crawl tubes/tunnels
  - Sand tables
  - Ramps connecting components
  - Play panels

# Accessible Play Counter





# Crawl Tunnel





# Sand Table



# Connector Ramps





# Play Panel



# Another Play Panel



# Other Play Components





# Arch Swing



# Inclusive Play Seat





# Surfaces

- Surfaces must be firm and stable with characteristics to reduce impact and injuries.
- Use surfacing that will accommodate anyone using a mobility device.

# Engineered Wood Fiber



# Bark Mulch





# Poured in Place



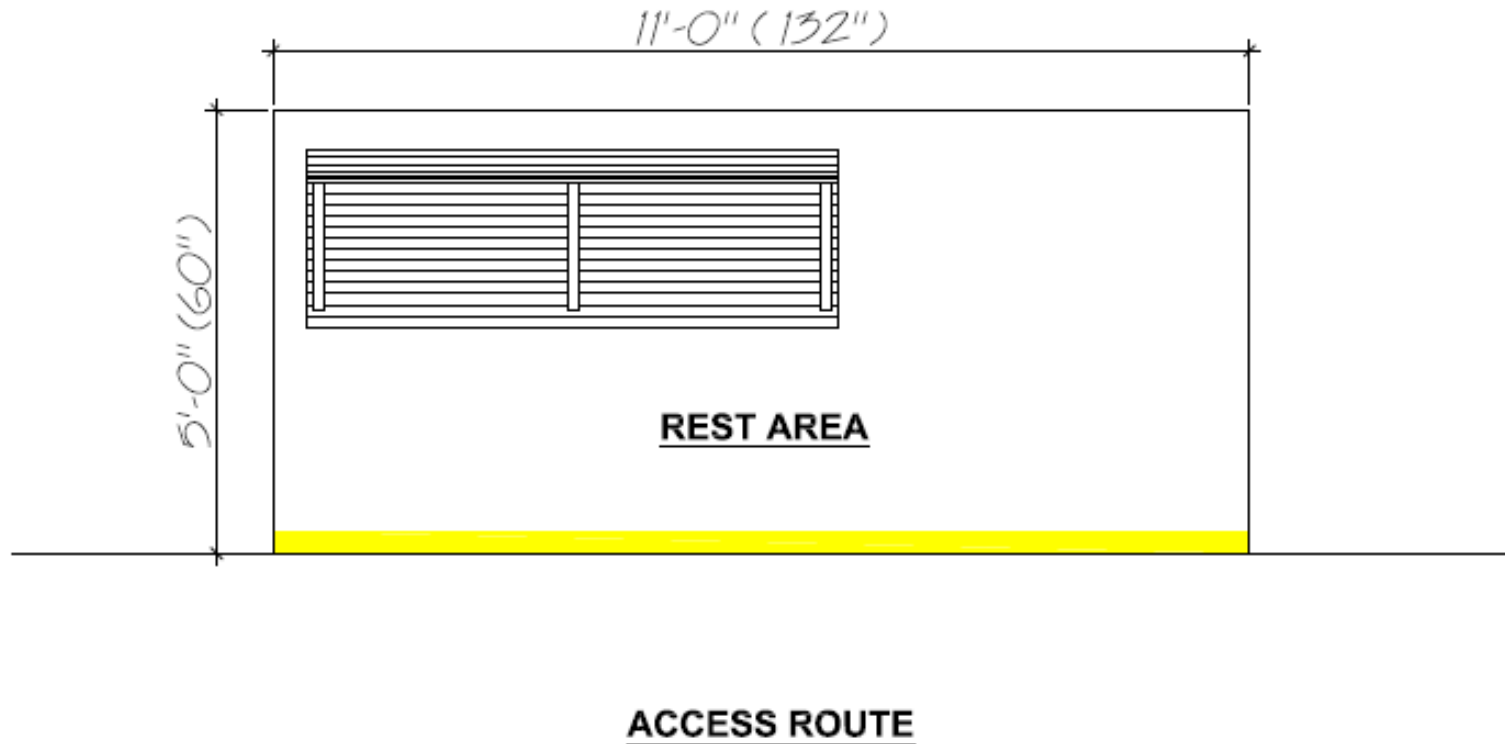
# Synthetic Tiles



# Seating Areas

- Consider providing at least one accessible seating area so that a caregiver with a disability can comfortably observe their child.
- Design considerations – a seating area with a bench should extend approximately 1500 mm (60”) beyond the end of the bench and be a minimum of 1220 mm (48”) deep.

# Rest Area Design





# Path of Travel

- Ensure that there are accessible routes at least 1500 mm (60") wide, connecting the playground with access elements such as sidewalks and parking lots.
- Difference between sidewalk and recreational trail as it pertains to slope.
- Sidewalk slope = 5% (1:20)
- Recreational trail slope = gentle running slope recommended

# Entry Points

- Entry points into play spaces should be a minimum of 1000 mm (39") to allow a mobility device to gain entry, while excluding larger vehicles.

# Other Considerations

- Choose a geographically accessible location within the community.
- Design with existing site characteristics to help minimize the cost of redevelopment.
- Ensure sufficient parking.
- Ensure that the accessible play structures are integrated into the plan for the entire site.
- Aim to minimize distance from park entry/parking lot to play space.
- If possible, consider providing accessible washrooms or other amenities near the play space.